

Quick Startup Guide



DOMO



DOMO GRI



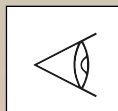
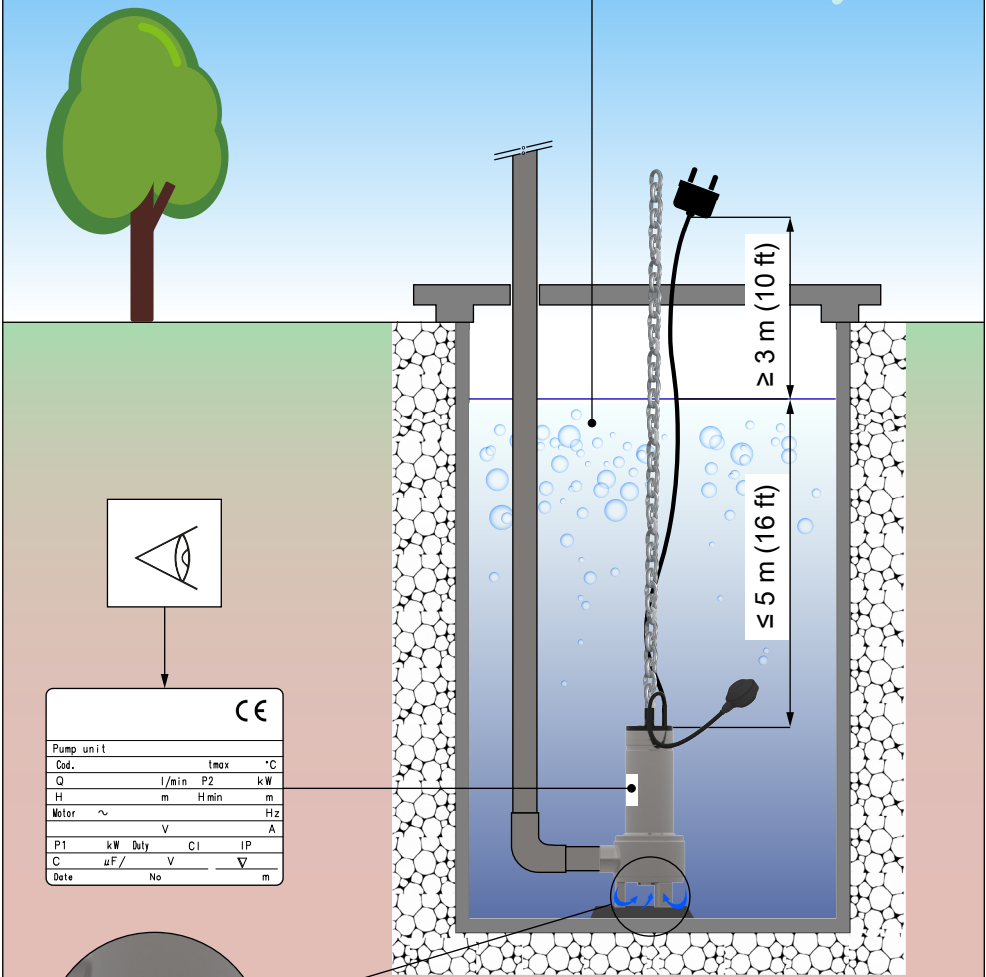
0 0 1 0 8 2 0 4 0



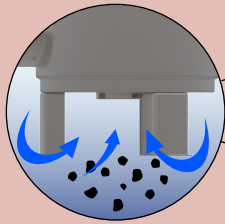
DOMO, DOMO GRI

i

0÷35°C (32÷95°F)

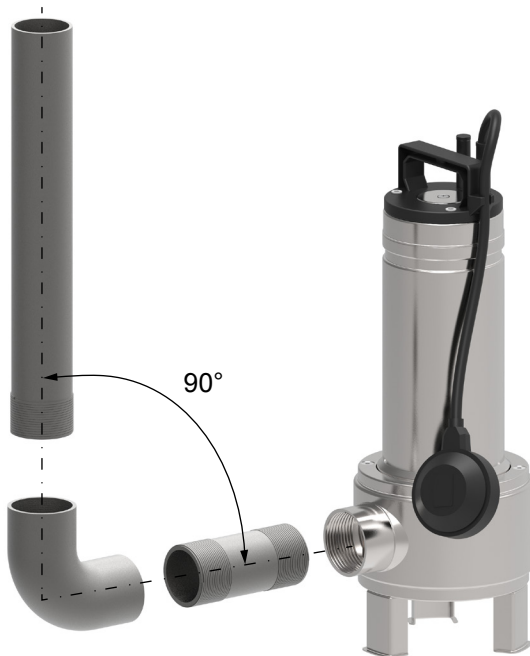
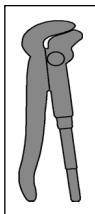


CE	
Pump unit	
Cod.	tmax °C
Q	l/min P2 kW
H	m Hmin
Motor	~ Hz
	V A
P1	kW Duty CI IP
C	µF / V ▽
Date	No m

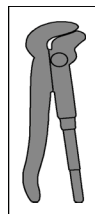
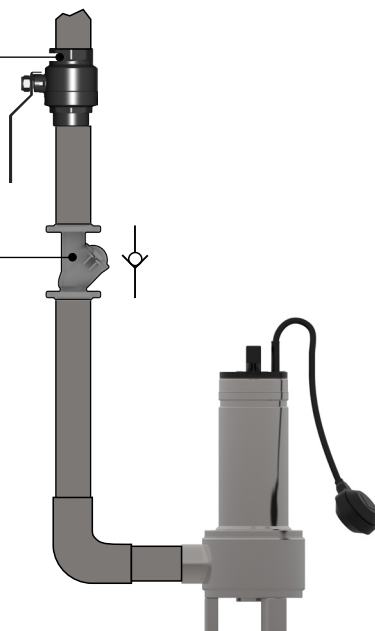


≤ 35 mm (1,4 in)	7, S7, 7VX, S7VX
≤ 50 mm (2 in)	10, 15, 20, 10VX, 15VX, 20VX
-	GRI

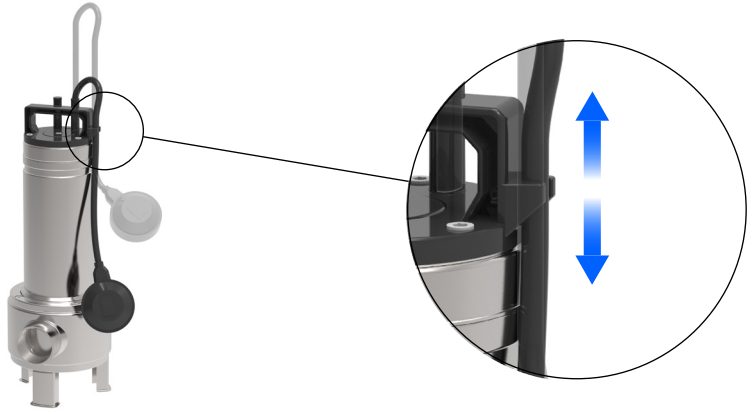
1



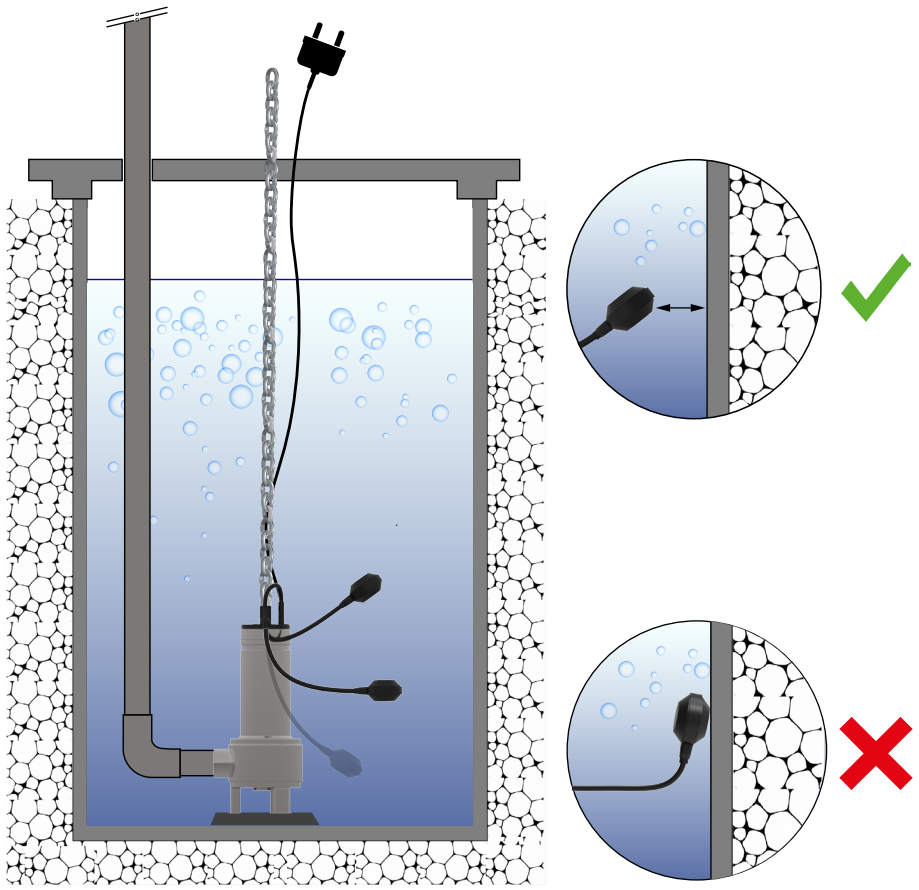
2



3

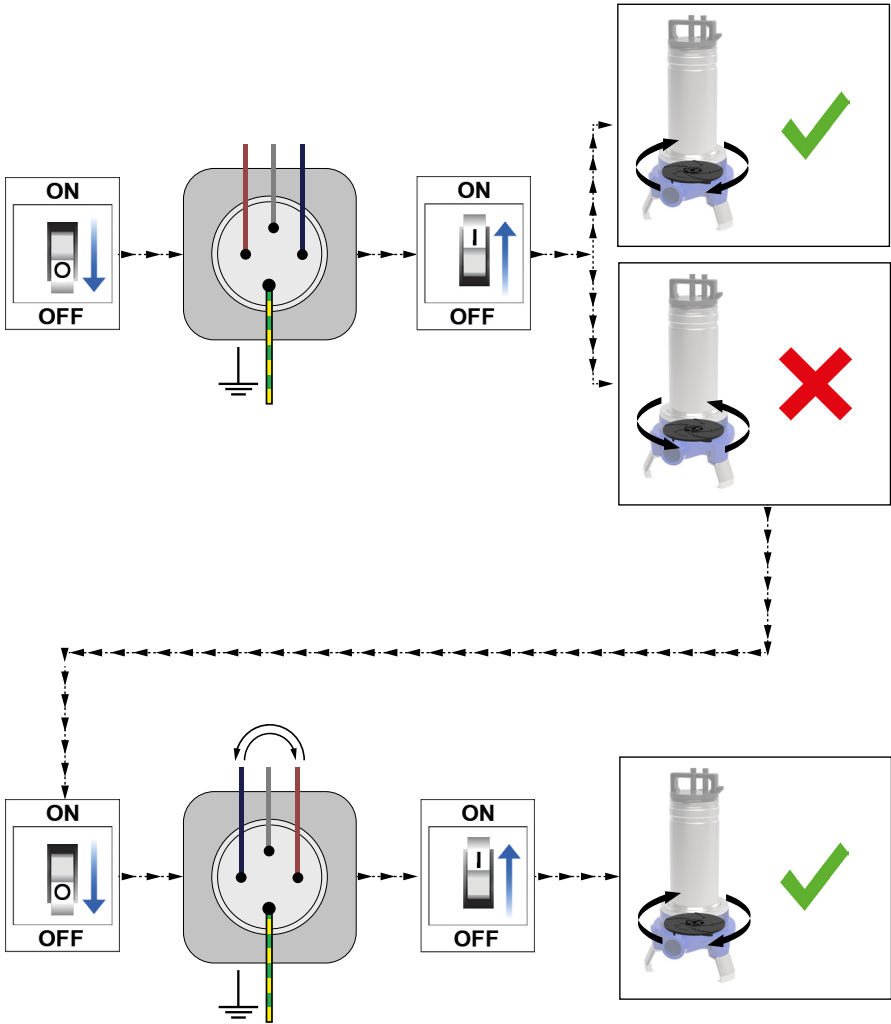
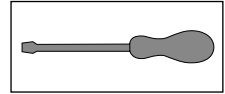
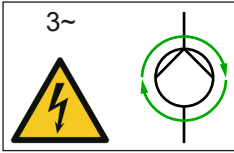


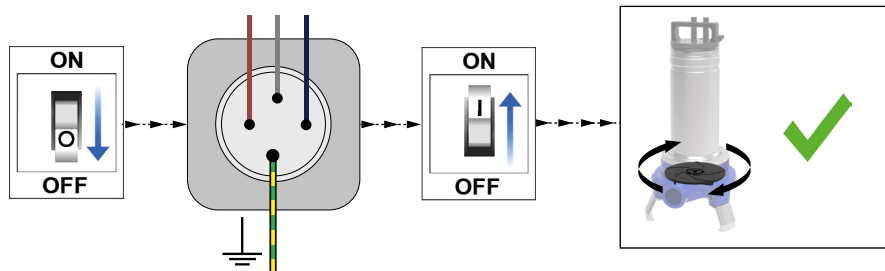
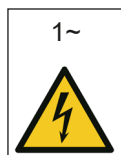
i





4a





DOMO



<http://lowara.com/pumps-circulators/submersible-wastewater-sewage-pumps/108679-2/?tab=literature>

DOMO GRI



<http://lowara.com/pumps-circulators/submersible-wastewater-sewage-pumps/domo-gri-submersible-grinder-pump/>

Xylem |'zīləm|



Xylem Service Italia S.r.l.
Via Vittorio Lombardi 14
Montecchio Maggiore (VI) 36075
Italy

© 2019 Xylem, Inc.

Cod. 001082040 rev.A ed.02/2019